

Tel: 01568 613147

Email: admin@westfield.hereford.sch.uk

Web site: www.westfield.hereford.sch.uk



WESTFIELD WEEKLY NEWS

Term: 2 Issue: 185

15th January 2016

Attendance News

Our target as a school is 95%.

The attendance for last week was
96.2%.

VALUES

**EVERY HALF TERM WE WILL BE LOOKING AT A
DIFFERENT VALUE.**

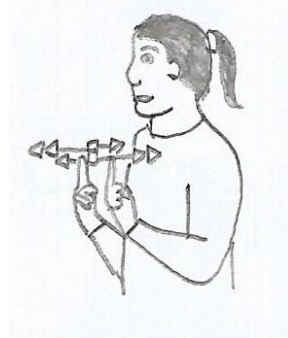
**THIS HALF TERM'S
VALUE IS:**

HONESTY



Sign of the Week

News



*'N' hands, hold them side by side,
alternately move forward and
backwards, fingers brush together.*

Super Signers/Communicators

Hedgehogs— Kaiden (Signing)

Otters— Kyle (Signing)

Woodpeckers – Heather
(Communicating)

Fox— Imani (Communicating)

Sixth Form - James
(Communicating)

Free Carers Training

Herefordshire Carers Support have a full range of
carer-specific training planned for 2016.

For full details of the courses, date and venues
please call Chrissy on 01432 356068 or for more
information look on the website at
www.herefordshirecarerssupport.org

Woodpecker news



Our project this week was about
flooding. We had two community
support officers visit us to talk about
rules and honesty. We did Jigsaw
practice this week.



By Jordon Gregory

Overnight short breaks for children with disabilities at 1 Ledbury Road consultation

Monday 11 January to Friday 19 February 2016

Herefordshire Council, supported by the Herefordshire Clinical Commissioning Group (HCCG), is undertaking a six week consultation on proposed changes to short breaks and respite services at 1 Ledbury Road, in order to secure provision for up to 12 months from April 2016.

As part of the proposed changes, the council's Cabinet will consider a report on the future service arrangements for 1 Ledbury Road on Thursday 21 January 2016. We would welcome any initial feedback by Tuesday 19 January, however all feedback received during the consultation period will be used to inform the final decision to be taken at the end of February 2016. The HCCG's governing body will also consider the proposals and consultation feedback when it meets on 26 January and 23 February.

The consultation consists of an online questionnaire and two face to face sessions for families on Monday 25 January at:

The Kindle Centre, Belmont Road, Hereford, HR2 7JE 1pm – 2pm
Shirehall, St Peter's Square, Hereford, HR1 2HX 6pm – 7pm

The consultation runs from Monday 11 January to Friday 19 February 2016 and we encourage you to have your say.

To find out more and have your say, please visit <http://newsroom.herefordshire.gov.uk/1-ledbury-road.aspx>. If you'd like to provide initial feedback or require the consultation in an alternative format, please call 01432 261596 or e-mail shortbreaks@herefordshire.gov.uk.

Dates for your diary

School

18th January—Dr Goodwin clinic at Westfield School site

8th February- Dr Goodwin clinic at Westfield School site

Saturday 13th February- Marches Family Network playday



Community

21st January—Singing for the Brain session at Leominster Community Centre 10.00-12.15

1st February Carers Drop in Day—Aspire Community Hub, Canal Road, Hereford 10.00-3.00

Wednesday 23rd March—Carers Pamper Day in Hereford (holistic therapies and art activities). For more info ring 01432 355373

**Sunday 24th April—Family & Friends Community Social Musical Entertainment at Hinton Community Centre 2.00-4.00 £4.
Free for Carers**

Half term 15-19th February